

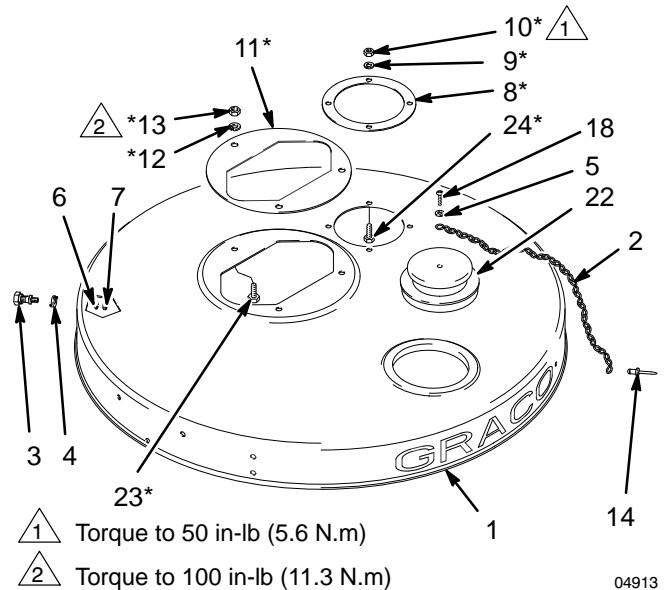
STAINLESS STEEL, PASSIVATED Drum Covers

Part No. 237-306 Drum Cover, Series A

For President, Monark, Standard, and Fast-Flo Pumps, and 206-758 Agitator

Ref No.	Part No.	Description	Qty
1	190-193	COVER, bare; 304 stainless steel	1
2	068-097	CHAIN, plug; stainless steel	12"
3	104-029	STUD, grounding	1
4	180-755	WASHER, tab	1
5	104-116	WASHER; no. 10; stainless steel	1
6	112-903	WASHER, spring lock; M5; 304 sst	1
7	112-899	NUT, hex; M5 x 0.8; stainless steel	1
8*	190-192	GASKET, agitator; polyethylene	1
9*	104-123	WASHER, spring lock; 1/4; 304 sst	4
10*	104-121	NUT, hex; 1/4-20; zinc-plated steel	4
11*	190-190	GASKET, pump; polyethylene	1
12*	112-904	WASHER, spring lock; 5/16; 304 sst	3
13*	108-946	NUT, hex; 5/16-18; sst	3
14	113-038	RIVET; sst	1
18	112-948	SCREW; 10-32 x 1/2" (13 mm); 300 sst	1
22	237-606	PLUG; polyethylene	1
23*	112-894	SCREW; 5/16-18 x 3/4" (19 mm); 304 sst	3
24*	112-895	SCREW; 1/4-20 x 3/4" (19 mm); 304 sst	4

* These parts are shipped unassembled.



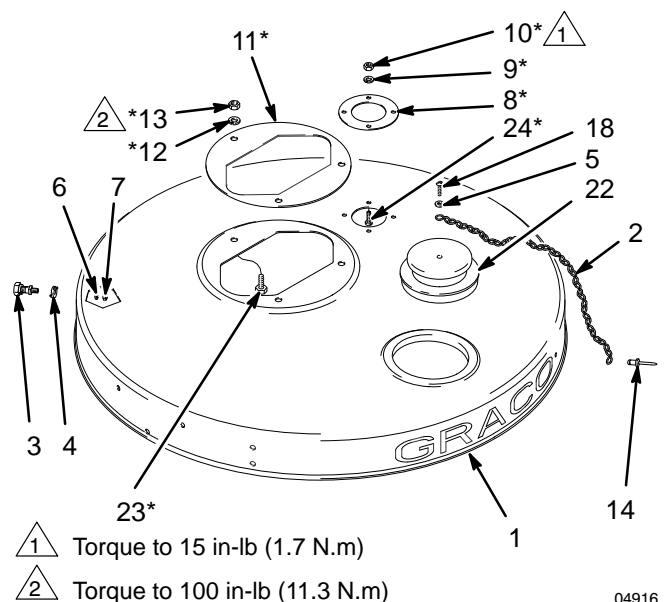
04913

Part No. 237-307 Drum Cover, Series A

For President and Monark Pumps, and 204-995 and 203-711 Agitators

Ref No.	Part No.	Description	Qty
1	190-194	COVER, bare; 304 stainless steel	1
2	068-097	CHAIN, plug; stainless steel	12"
3	104-029	STUD, grounding	1
4	180-755	WASHER, tab	1
5	104-116	WASHER; no. 10; stainless steel	1
6	112-903	WASHER, spring lock; M5; 304 sst	1
7	112-899	NUT, hex; M5 x 0.8; stainless steel	1
8*	190-191	GASKET, agitator; polyethylene	1
9*	104-123	WASHER, spring lock; 1/4; 304 sst	4
10*	112-901	NUT, hex; 1/4-20; sst	4
11*	190-190	GASKET, pump; polyethylene	1
12*	112-904	WASHER, spring lock; 5/16; 304 sst	3
13*	111-303	NUT, hex; 5/16-18; sst	3
14	113-038	RIVET; sst	1
18	112-948	SCREW; 10-32 x 1/2" (13 mm); 300 sst	1
22	237-606	PLUG; polyethylene	1
23*	112-894	SCREW; 5/16-18 x 3/4" (19 mm); 304 sst	3
24*	110-345	SCREW; 10-32 x 5/8" (16 mm); sst	4

* These parts are shipped unassembled.



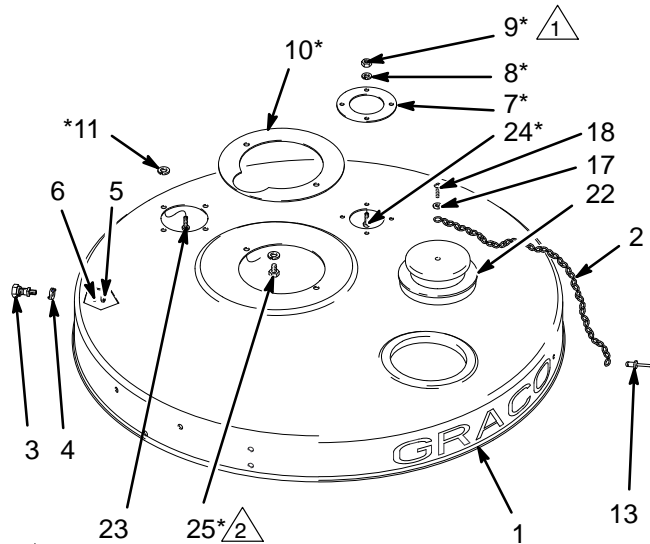
04916

Part No. 237–308 Drum Cover, Series A

For President Pumps, and 204–995 and 206–219 Agitators

Ref No.	Part No.	Description	Qty
1	190–195	COVER, bare; 304 stainless steel	1
2	068–097	CHAIN, plug; stainless steel	12"
3	104–029	STUD, grounding	1
4	180–755	WASHER, tab	1
5	112–899	NUT, hex; M5 x 0.8; stainless steel	1
6	112–903	WASHER, spring lock; M5; 304 sst	1
7*	190–191	GASKET, agitator; polyethylene	1
8*	112–906	WASHER, spring lock; no. 10; 304 sst	4
9*	112–901	NUT, hex; 10–32; sst	4
10*	190–183	GASKET, pump; polyethylene	1
11*	104–123	WASHER, spring lock; 1/4; 304 sst	4
13	113–038	RIVET; sst	1
17	104–116	WASHER; no. 10; stainless steel	1
18	112–948	SCREW; 10–32 x 1/2" (13 mm); 300 sst	1
22	237–606	PLUG; polyethylene	1
23	112–925	SCREW; 1/4–20 x 1/2" (13 mm)	2
24*	110–345	SCREW; 10–32 x 5/8" (16 mm); sst	4
25*	112–896	SCREW; 1/4–20 x 1/2" (13 mm); sst	2

* These parts are shipped unassembled.



1 Torque to 15 in-lb (1.7 N.m)

2 Torque to 50 in-lb (5.6 N.m)

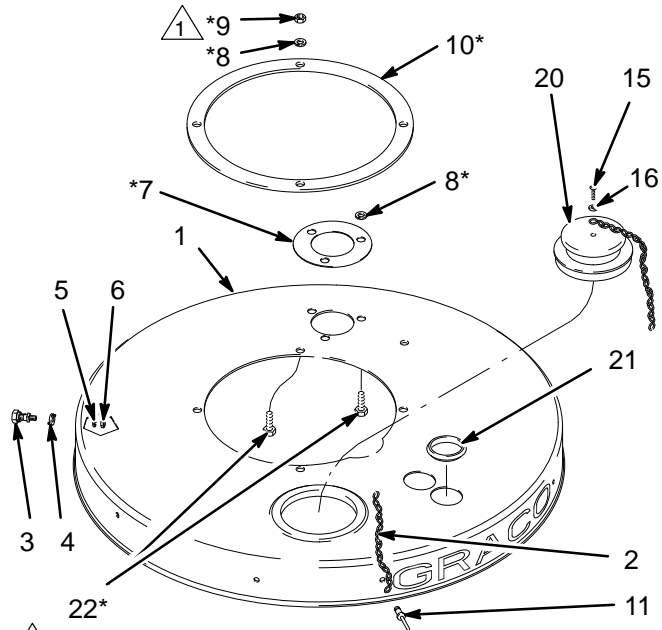
04918

Part No. 237–309 Drum Cover, Series A

For King, Bulldog, and President Pumps, and 205–715 Agitator

Ref No.	Part No.	Description	Qty
1	190–196	COVER, bare; 304 stainless steel	1
2	068–097	CHAIN, plug; stainless steel	12"
3	104–029	STUD, grounding	1
4	180–755	WASHER, tab	1
5	112–903	WASHER, spring lock; M5; 304 sst	1
6	112–899	NUT, hex; M5 x 0.8; stainless steel	1
7*	190–216	GASKET, agitator; polyethylene	1
8*	112–922	WASHER, spring lock; 3/8; 304 sst	4
9*	112–913	NUT, hex; 3/8–16; sst	4
10*	190–182	GASKET, pump; LDPE foam	1
11	113–038	RIVET; sst	1
15	112–948	SCREW; 10–32 x 1/2" (13 mm); 300 sst	1
16	104–116	WASHER; no. 10; stainless steel	1
20	237–606	PLUG; polyethylene	1
21	104–691	CAP, plug; polyethylene	2
22*	102–471	SCREW; 3/8–16 x 1" (25 mm); sst	7

* These parts are shipped unassembled.



1 Torque to 180 in-lb (20.3 N.m)

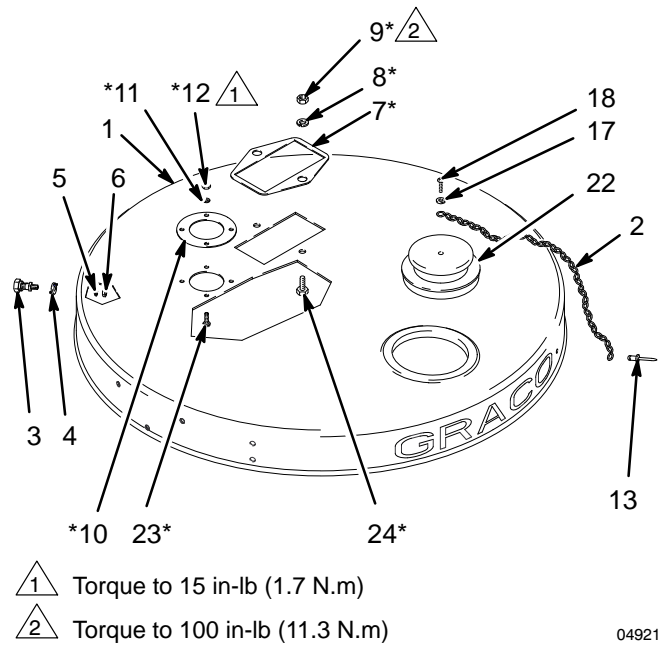
04920

Part No. 237-310 Drum Cover, Series A

For Standard Pumps, and 204-995 and 206-219 Agitators

Ref No.	Part No.	Description	Qty
1	190-197	COVER, bare; 304 stainless steel	1
2	068-097	CHAIN, plug; stainless steel	12"
3	104-029	STUD, grounding	1
4	180-755	WASHER, tab	1
5	112-903	WASHER, spring lock; M5; 304 sst	1
6	112-899	NUT, hex; M5 x 0.8; stainless steel	1
7*	190-225	GASKET, pump; polyethylene	1
8*	112-904	WASHER, spring lock; 5/16; 304 sst	2
9*	108-946	NUT, hex; 5/16-18; sst	2
10*	190-191	GASKET, agitator; polyethylene	1
11*	112-906	WASHER, spring lock; no. 10; 304 sst	4
12*	112-901	NUT, hex; 10-32; sst	4
13	113-038	RIVET	1
17	104-116	WASHER; no. 10; stainless steel	1
18	112-948	SCREW; 10-32 x 1/2" (13 mm); 300 sst	1
22	237-606	PLUG; polyethylene	1
23*	110-345	SCREW; 10-32 x 5/8" (16 mm); sst	4
24*	112-894	SCREW; 5/16-18 x 3/4" (19 mm); 304 sst	3

* These parts are shipped unassembled.



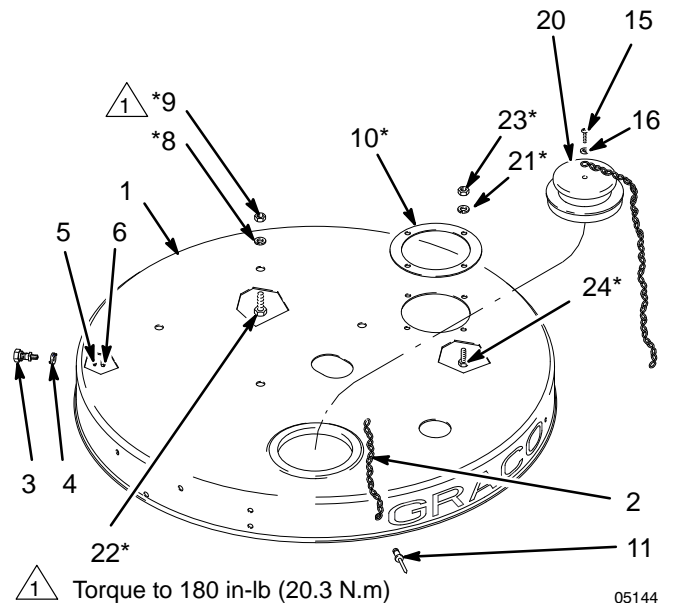
04921

Part No. 237-949 Drum Cover, Series A

For Glutton Pumps

Ref No.	Part No.	Description	Qty
1	190-736	COVER, bare; 304 stainless steel	1
2	068-097	CHAIN, plug; stainless steel	12"
3	104-029	STUD, grounding	1
4	180-755	WASHER, tab	1
5	112-903	WASHER, spring lock; M5; 304 sst	1
6	112-899	NUT, hex; M5 x 0.8; stainless steel	1
8*	112-922	WASHER, spring lock; 3/8; 304 sst	4
9*	112-913	NUT, hex; 3/8-16; sst	4
10*	190-192	GASKET, agitator; polyethylene	1
11	113-038	RIVET; sst	1
15	112-948	SCREW; 10-32 x 1/2" (13 mm); 300 sst	1
16	104-116	WASHER; no. 10; stainless steel	1
20	237-606	PLUG; polyethylene	1
21*	104-123	WASHER, spring lock; 1/4; 304 sst	4
22*	102-471	SCREW; 3/8-16 x 1" (25 mm); sst	4
23*	104-121	NUT, hex; 1/4-20; zinc-plated steel	4
24*	112-895	SCREW; 1/4-20 x 3/4" (19 mm); 304 sst	4

* These parts are shipped unassembled.

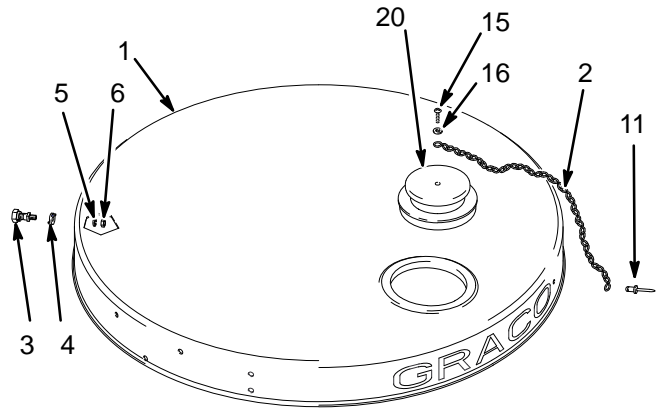


05144

Part No. 238-008 Drum Cover, Series A

Bare Cover

Ref No.	Part No.	Description	Qty
1	190-770	COVER, bare; 304 stainless steel	1
2	068-097	CHAIN, plug; stainless steel	12"
3	104-029	STUD, grounding	1
4	180-755	WASHER, tab	1
5	112-903	WASHER, spring lock; M5; 304 sst	1
6	112-899	NUT, hex; M5 x 0.8; stainless steel	1
11	113-038	RIVET; sst	1
15	112-948	SCREW; 10-32 x 1/2" (13 mm); 300 sst	1
16	104-116	WASHER; no. 10; stainless steel	1
20	237-606	PLUG; polyethylene	1

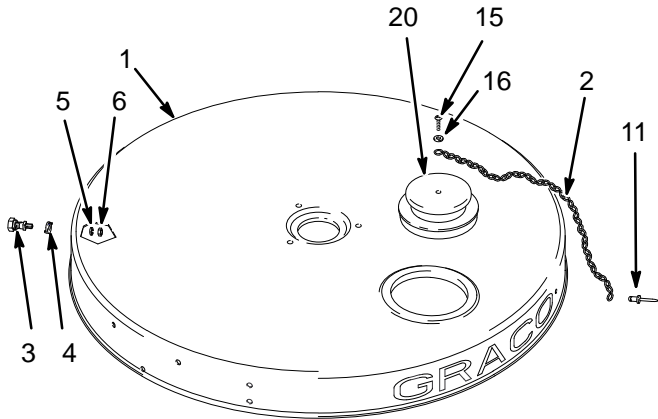


05145

Part No. 238-283 Drum Cover, Series A

For 238-157 Agitators; Included in 231-413 and 231-414 Agitator Packages

Ref No.	Part No.	Description	Qty
1	190-995	COVER, bare; 304 stainless steel	1
2	068-097	CHAIN, plug; stainless steel	12"
3	104-029	STUD, grounding	1
4	180-755	WASHER, tab	1
5	112-903	WASHER, spring lock; M5; 304 sst	1
6	112-899	NUT, hex; M5 x 0.8; stainless steel	1
11	113-038	RIVET; sst	1
15	112-948	SCREW; 10-32 x 1/2" (13 mm); 300 sst	1
16	104-116	WASHER; no. 10; stainless steel	1
20	237-606	PLUG; polyethylene	1



05726

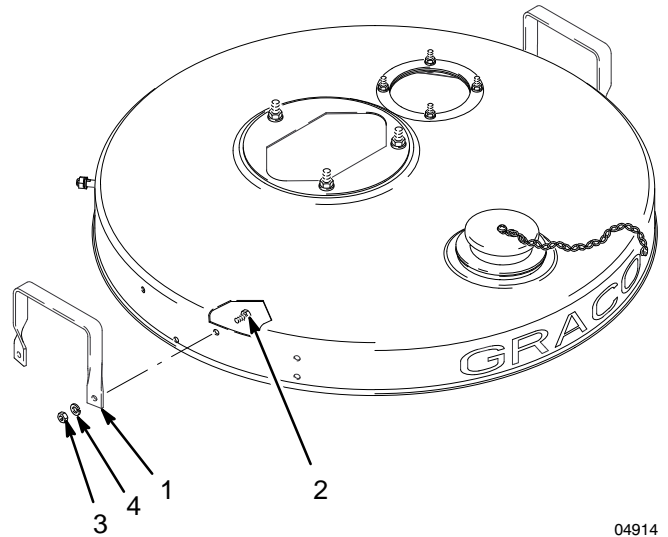
Part No. 237-524 Optional Handle Kit

This kit must be ordered separately. The kit provides two handles and attaching hardware, to mount in existing holes of drum cover. Assemble as follows:

1. Position handles (1) as shown in drawing at right.
2. Insert screws (2).
3. Secure with washers (4) and nuts (3).

Ref

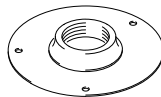
Ref No.	Part No.	Description	Qty
1	190-185	HANDLE, cover; 304 sst	2
2	112-896	SCREW, cap; 1/4-20 x 1/2" (13 mm); 304 sst	4
3	104-121	NUT; 1/4-20; 304 sst	4
4	104-123	WASHER, spring lock; 1/4; 304 sst	4



04914

Part No. 237-571 Optional Siphon Tube Adapter Plate

Fits Covers 237-306 and 237-307.



04176

Part No. 237-525 Elevator Retrofit Kit

This kit must be ordered separately. The kit enables you to mount these drum covers on all Graco elevators. Includes instructions.

Part No. 112-924 Drum Cover Lip Gasket

Attach to the top of the drum.

Manual Change Summary

Drum cover Model No. 238–283, for use with the Heavy-Duty Stainless Steel Drum Agitator (*manual 308–609*), is added to the manual.

The Graco Warranty and Disclaimers

WARRANTY

Graco warrants all equipment manufactured by it and bearing its name to be free from defects in material and workmanship on the date of sale by an authorized Graco distributor to the original purchaser for use. As purchaser's sole remedy for breach of this warranty, Graco will, for a period of twelve months from the date of sale, repair or replace any part of the equipment proven defective. This warranty applies only when the equipment is installed, operated and maintained in accordance with Graco's written recommendations.

This warranty does not cover, and Graco shall not be liable for, any malfunction, damage or wear caused by faulty installation, misapplication, abrasion, corrosion, inadequate or improper maintenance, negligence, accident, tampering, or substitution of non-Graco component parts. Nor shall Graco be liable for malfunction, damage or wear caused by the incompatibility with Graco equipment of structures, accessories, equipment or materials not supplied by Graco, or the improper design, manufacture, installation, operation or maintenance of structures, accessories, equipment or materials not supplied by Graco.

This warranty is conditioned upon the prepaid return of the equipment claimed to be defective to an authorized Graco distributor for verification of the claim. If the claimed defect is verified, Graco will repair or replace free of charge any defective parts. The equipment will be returned to the original purchaser transportation prepaid. If inspection of the equipment does not disclose any defect in material or workmanship, repairs will be made at a reasonable charge, which charges may include the costs of parts, labor and transportation.

DISCLAIMERS AND LIMITATIONS

The terms of this warranty constitute purchaser's sole and exclusive remedy and are in lieu of any other warranties (express or implied), **including warranty of merchantability or warranty of fitness for a particular purpose**, and of any non-contractual liabilities, including product liabilities, based on negligence or strict liability. Every form of liability for direct, special or consequential damages or loss is expressly excluded and denied. In no case shall Graco's liability exceed the amount of the purchase price. Any action for breach of warranty must be brought within two (2) years of the date of sale.

EQUIPMENT NOT COVERED BY GRACO WARRANTY

Graco makes no warranty, and disclaims all implied **warranties of merchantability and fitness for a particular purpose**, with respect to accessories, equipment, materials, or components sold but not manufactured by Graco. These items sold, but not manufactured by Graco (such as electric motor, switches, hose, etc.) are subject to the warranty, if any, of their manufacturer. Graco will provide purchaser with reasonable assistance in making any claim for breach of these warranties.

Graco Phone Number

TO PLACE AN ORDER, contact your Graco distributor, or call this number to identify the distributor closest to you:
1-800-367-4023 Toll Free

Sales Offices: Atlanta, Chicago, Detroit, Los Angeles

Foreign Offices: Belgium, Canada, England, Korea, Switzerland, France, Germany, Hong Kong, Japan

GRACO INC. P.O. BOX 1441 MINNEAPOLIS, MN 55440-1441

PRINTED IN U.S.A. 308-466 October 1994, Revised December 1995